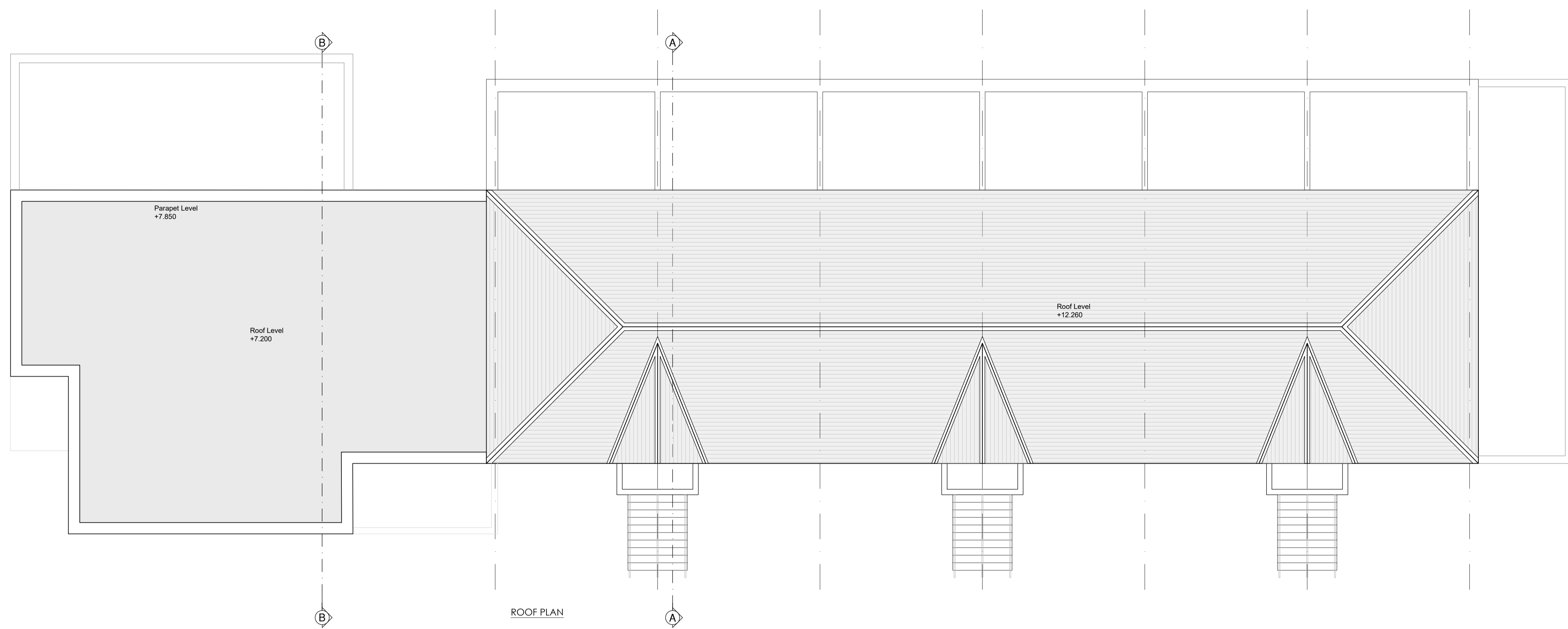
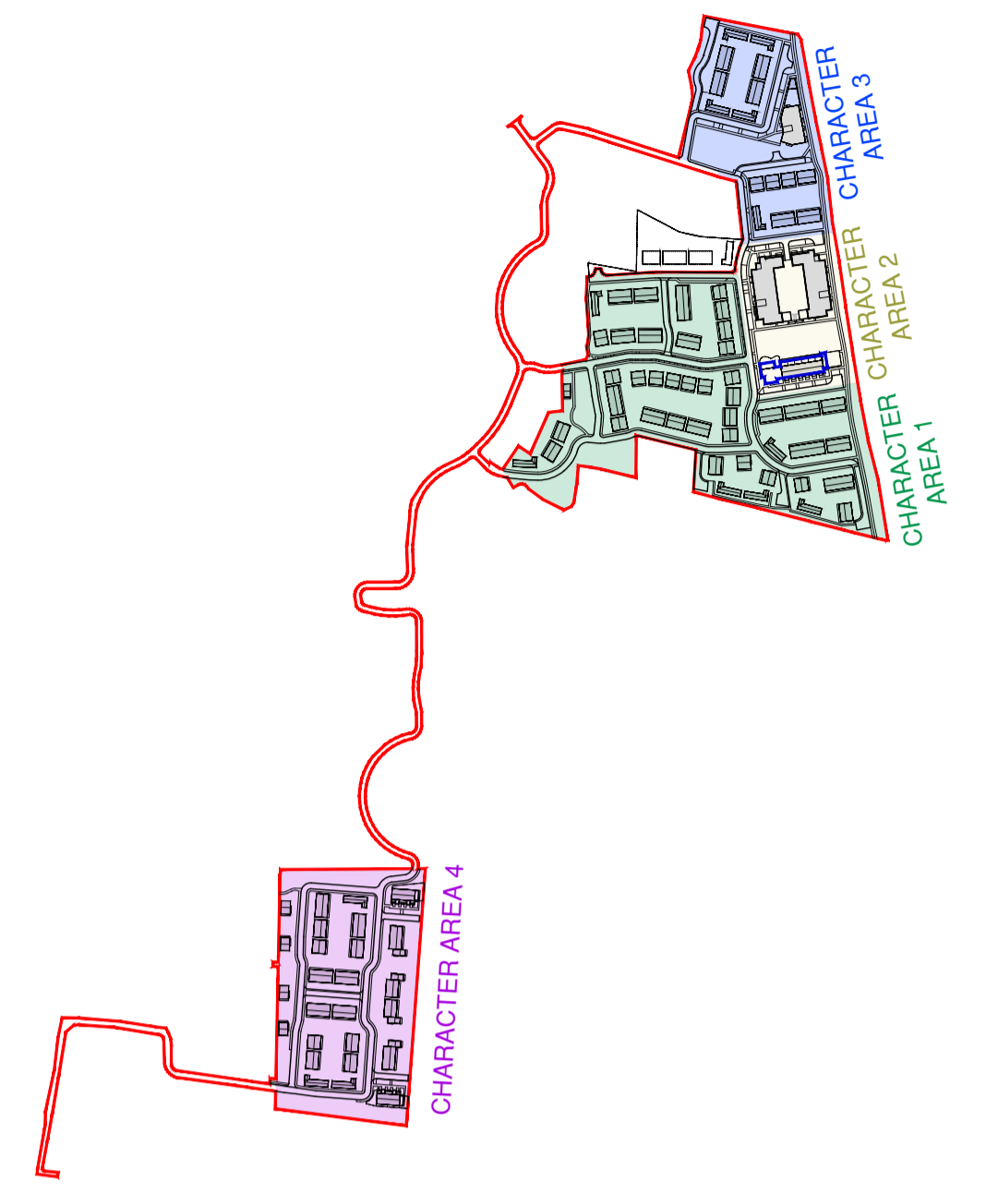
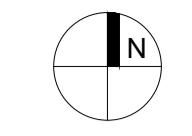
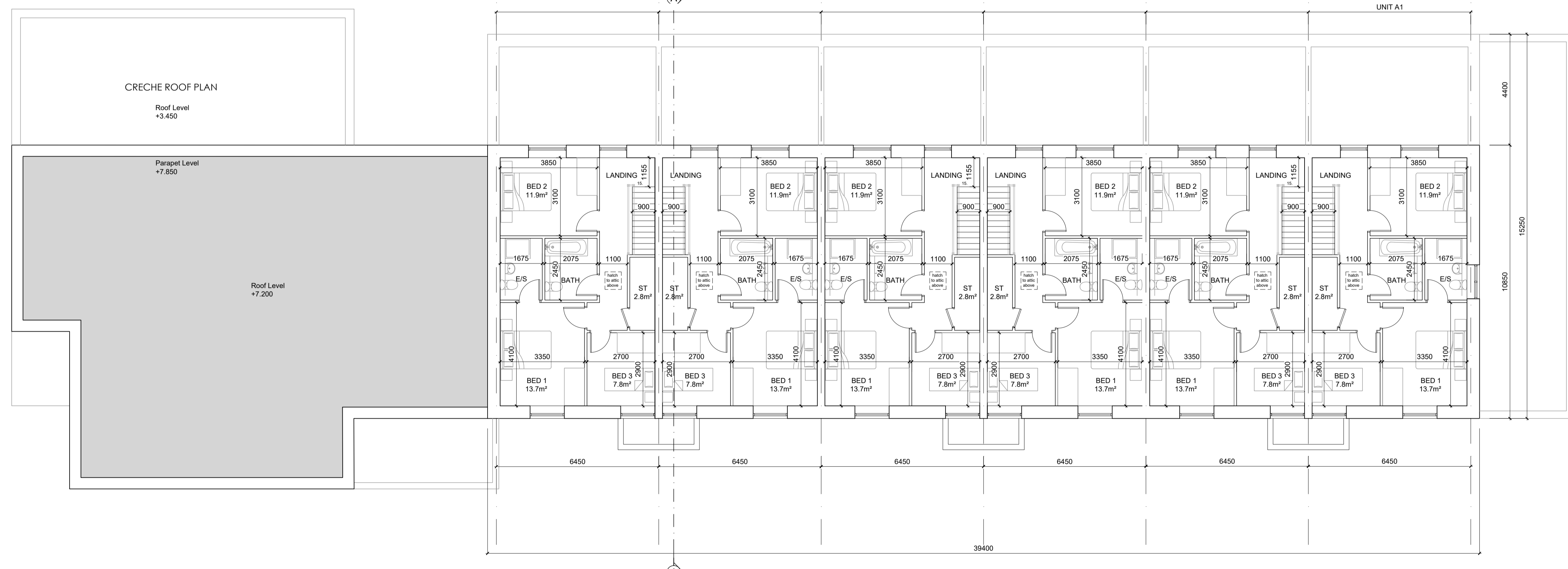


KEY PLAN

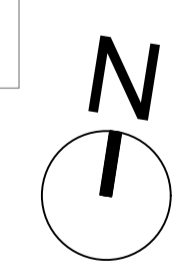


ROOF PLAN

APARTMENT A1 SECOND FLOOR 60.5m² 121m² (OVERALL) APARTMENT A1 SECOND FLOOR 60.5m² 121m² (OVERALL) APARTMENT A1 SECOND FLOOR 60.5m² 121m² (OVERALL) APARTMENT A1 SECOND FLOOR 60.5m² 121m² (OVERALL) APARTMENT A1 SECOND FLOOR 60.5m² 121m² (OVERALL) APARTMENT A1 SECOND FLOOR 60.5m² 121m² (OVERALL)



SECOND FLOOR PLAN



NOTES:
DO NOT SCALE FROM DRAWINGS. WORK TO FIGURED DIMENSIONS ONLY. ARCHITECT TO BE NOTIFIED OF ALL DISCREPANCIES.

A1	2 STOREY 3 BED NO IN BLOCK: 6	APARTMENT UNIT 121 SQM / 1302 SQF
-----------	-------------------------------------	---

REVISIONS		
DATE	DESCRIPTION	No.

<p>M^COORM M^COROSSAN O'ROURKE MANNING ARCHITECTS</p>	PROJECT TITLE: BROOMFIELD, BACK ROAD, MALAHIDE	DATE: FEB 22	DRAWN BY: SM
	DRAWING TITLE: DUPLEX BLOCK D SECOND FLOOR & ROOF PLANS	SCALE: 1:100	REVISION: -
	1 Grantham Street, Dublin 8, D08 A49Y, Ireland. Tel: 01-4788700 Fax: 01-4788711 E-Mail: arch@mcoorm.com	JOB NO: 18034	DRAWING NO: PL302